

nuxeo

Nuxeo DAM 1.x

Installation Guide

Table of Contents

1. Nuxeo DAM Installation Guide	3
1.1 Hardware and Software requirements	9
1.2 Currently Supported File Formats	11
1.3 Set up related software	13
1.4 Nuxeo DAM and Nuxeo DM	14
1.4.1 Working with the same repository	15

Nuxeo DAM Installation Guide

Welcome to the Nuxeo DAM Installation Guide.

You have just downloaded Nuxeo DAM 1.x. Now how do you try it on your computer?


Nuxeo DAM can be installed on any computer, providing that [Java is installed](#) (see the [detailed system requirements](#) for more information). Installing Nuxeo DAM takes 3 simple steps:


1. Install the downloaded package,
2. Start the server,
3. Open Nuxeo DAM in a web browser.

On this page:

- [How to install Nuxeo DAM on Windows](#)
- [How to install Nuxeo DAM on Mac OS](#)
- [How to install Nuxeo DAM on Linux](#)
- [How to install the DAM VM Image \(OS independent\)](#)

Once Nuxeo DAM is installed, you may want to install some [related software](#) used for some DAM features.

 For more information on how to install and configure a Nuxeo server, see the [Nuxeo configuration page](#).


 By default, you cannot run two Nuxeo applications at the same time. If you want to run two Nuxeo applications at the same time (for instance a Nuxeo DM and a Nuxeo DAM), you need to [change the default port used by the Nuxeo server](#).

How to install Nuxeo DAM on Windows

Nuxeo DAM for Windows comes as a .zip package.

Step 1: Install Nuxeo DAM:


Unzip the .zip archive using your favorite tool.

 On Windows, because of the limitation on paths length, it is recommended to extract the content of the archive at root of C : .

You can then [start Nuxeo DAM](#).

Step 2: Start Nuxeo DAM:

1. Open the Nuxeo Control Panel.


 Depending on how you installed your application, you can open the Nuxeo Control Panel in two different ways. See below for the appropriate command.

The Nuxeo Control Panel opens.

2. Click on the **Start** button.
Starting the Nuxeo server takes between 30 sec and several minutes, depending on your hardware and the distribution you have chosen to install.
When the server is started, the **Start** button becomes a **Stop** button.
3. Open a browser and type the URL <http://localhost:8080/nuxeo/>.
 - On 1.0 to 1.2 versions, you can directly log in to your application using the **Administrator** user name and the **Administrator** password. Once logged with superuser credentials, you can start [creating regular users](#) and [import digital assets](#). See the [User Guide](#) to discover all Nuxeo DAM features.
 - On DAM 1.3, you need to set up your application's configuration using the displayed [start up wizard](#).

How to open the Panel Control

Nuxeo DAM package	Command
zip package of Nuxeo DAM 1.0 to 1.2	In the folder C:\Nuxeo application\bin, double-click on nuxeoctl.exe.
zip package of Nuxeo DAM 1.3	In the folder C:\Nuxeo application\bin, double-click on nuxeoctl.bat.

 On Windows 7, you need to run the nuxeoctl.bat and Start Nuxeo.bat commands as an administrator if you haven't installed your Nuxeo application at the root of C: (for instance in C:\Program Files). To run them as an administrator, right-click on the command and click on "Run as administrator".

On Windows, it is possible to start Nuxeo as a service. Please report the [Install the application as a Windows service](#) page for guidelines and examples.

How to install Nuxeo DAM on Mac OS

Nuxeo DAM runs on Mac OS 10.5 or greater (Leopard or Snow Leopard). For more information about supported environments, you can check the [Hardware and Software requirements](#). Installing and running Nuxeo DAM on a Mac takes two steps:

Step 1: Install Nuxeo DAM

1. Unzip the downloaded ZIP file using your favorite tool.

Step 2: Start Nuxeo DAM

1. From the Finder, click on "Start Nuxeo.command". You can also drag and drop the start script in the terminal and press Enter.



The command may not be executable by default. If it is the case, in the terminal go to the bin directory of Nuxeo and type the line below:
`chmod +x *.command`

- The Control Panel opens.
2. Click on the **Start** button.
Starting the Nuxeo server takes between 30 sec and several minutes, depending on your hardware and the distribution you have chosen to install.
When the server is started, the **Start** button becomes a **Stop** button.
 3. Open a browser and type the URL <http://localhost:8080/nuxeo/>.
 - On 1.0 to 1.2 versions, you can directly log in to your application using the **Administrator** user name and the **Administrator** password. Once logged with superuser credentials, you can start [creating regular users](#) and [import digital assets](#). See the [User Guide](#) to discover all Nuxeo DAM features.
 - On DAM 1.3, you need to set up your application's configuration using the displayed [start up wizard](#).

How to install Nuxeo DAM on Linux

You can install Nuxeo DAM on Linux in three different ways:

- [from the downloaded zip archive](#),
- [from APT sources for Debian](#),
- [from the downloaded Debian package](#).

How to install Nuxeo DAM from the zip archive

Using the zip archive installs Nuxeo DAM only (you may need to manually install third-parties).

Unzip the downloaded ZIP file using your favorite tool.
 You can then [start Nuxeo DAM](#).

How to install Nuxeo DAM with APT sources for Debian

Installing Nuxeo DAM using the APT sources for Debian installs and configures Nuxeo DAM, but it also installs all required dependencies for an optimal use of the application.

To install Nuxeo DAM using the APT sources for Debian:

1. Activate multiverse and partner sources for JDK Sun install and other third parties:
 - a. Click on System/Administration/Software Sources.
 - b. Check the multiverse and partner sources.

2. Add the Nuxeo key:
 - Download the [Nuxeo key](#) and import it in the Authentication tab.
 - Or, in a terminal, issue:

```
wget -q -O- http://apt.nuxeo.org/nuxeo.key
| sudo apt-key add -
```

3. Add the Nuxeo source:
 - In the Other Software tab, add "deb <http://apt.nuxeo.org/> lucid releases" to the software sources.
 - Or issue the following commands in a terminal:

```
sudo add-apt-repository "deb
http://apt.nuxeo.org/ lucid releases"
sudo apt-get update
```

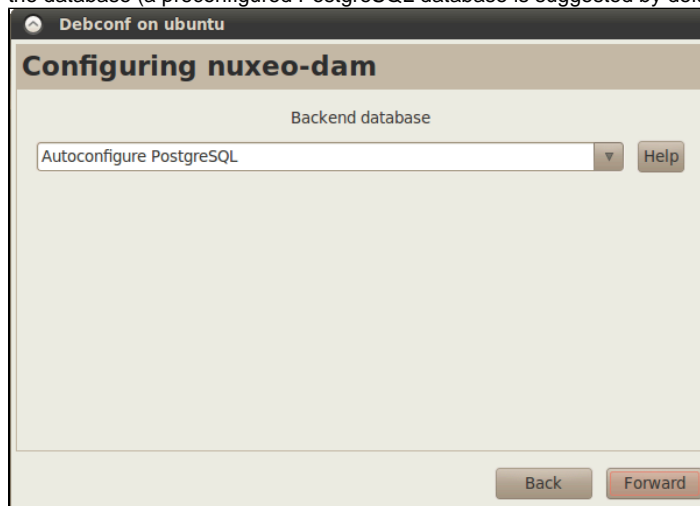
4. Install Nuxeo DAM:
 - Click on nuxeo-dam (apt://nuxeo-dam)
 - or, in a terminal, issue:

```
sudo apt-get install nuxeo-dam
```

5. Follow the instructions displayed.

If it's your first install of Nuxeo DAM, you can configure:

 - the bind address,
 - the port,
 - the database (a preconfigured PostgreSQL database is suggested by default).



The application is installed as a service. It is automatically started and set to automatically start at boot.

Installation details

Here are some information of the installation's configuration:

- application: `opt/nuxeo-dam`

- Configuration file (nuxeo.conf): `etc/nuxeo-dam/nuxeo.conf`
- logs: `var/log/nuxeo-dam`
- data: `var/log/nuxeo-dam`

How to install Nuxeo DAM with the Debian package

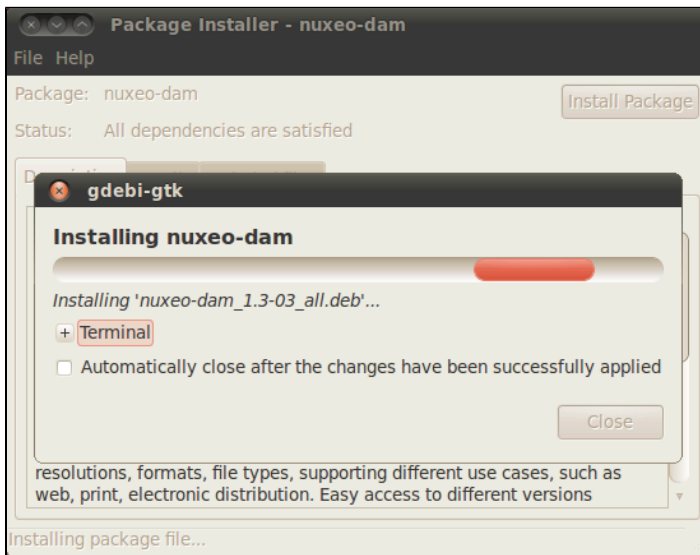
A Debian installer (.deb) is available for download. This installer enables you to configure your application at the time of installation and to install it as a Debian service directly.

To install Nuxeo DAM using the Debian package:

Double-click on the downloaded .deb file and follow the instructions displayed. If it's your first install of Nuxeo DAM, you can configure:

- the bind address,
- the port,
- the database (a preconfigured PostgreSQL database is suggested by default).

The application is automatically installed as a service and immediately started and set to automatically start at boot.



The installation's configuration (where to find the configuration file, logs etc) are the same as for the APT sources installation.

How to start Nuxeo DAM on Linux

For a Nuxeo DAM installed from the zip archive:

1. Launch a terminal and go to your installation directory.
2. Start the server using the `nuxeoctl` script (located in the `bin` directory):

```
./bin/nuxeoctl gui
```



The command used to launch the Control Panel may not be executable by default. If it is the case, in the terminal go to the `bin` directory of Nuxeo and type the line below to be able to use it:

```
chmod +x *.sh *ctl
```

The Control Panel opens.

3. Click on the **Start** button.
Starting the Nuxeo server takes between 30 sec and several minutes, depending on your hardware and the distribution you have chosen to install.
When the server is started, the **Start** button becomes a **Stop** button.
4. Open a browser and type the URL `http://localhost:8080/nuxeo/`.
 - On 1.0 to 1.2 versions, you can directly log in to your application using the **Administrator** user name and the **Administrator** password. Once logged with superuser credentials, you can start [creating regular users](#) and [import digital assets](#). See the [User Guide](#) to discover all Nuxeo DAM features.
 - On DAM 1.3, you need to set up your application's configuration using the displayed [startup wizard](#).

How to install the DAM VM Image (OS independent)

You have chosen to download our ready-to-run Virtual Machine image from the [Nuxeo DAM Download Page](#) on [nuxeo.com](#). Now how do you try it on your computer?

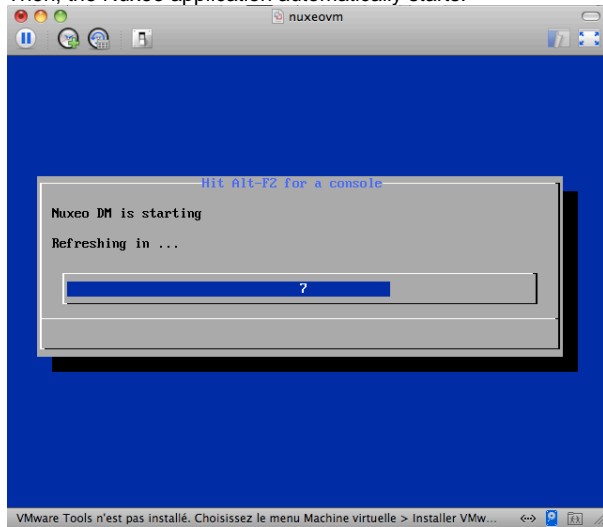
1. Unzip the downloaded package.
You get a folder with the required file for the virtual machine image to run.
2. Start the virtual machine image in your virtual machine application by double-clicking on it.

The VM image starts.

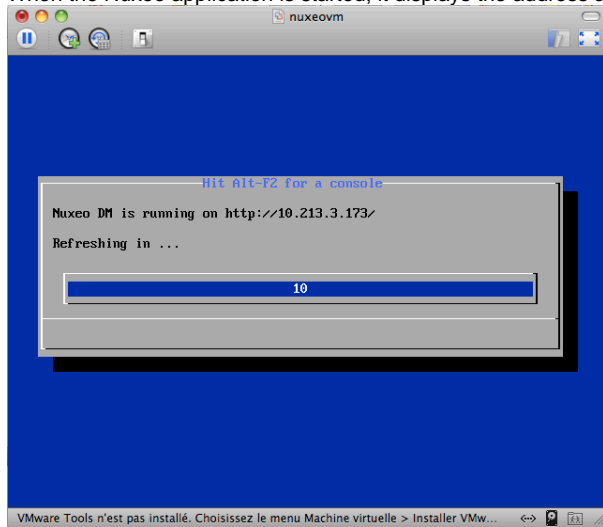
```

[ 2.685475] Write protecting the kernel read-only data: 1040k
Loading, please wait...
[ 2.658946] udev: starting version 151
Begin: Loading essential drivers... ..
Done.
Begin: Running /scripts/init-premount ...
Done.
Begin: Mounting root file system... ..
Begin: Running /scripts/local-top ...
Done.
[ 2.856461] Fusion MPT base driver 3.04.12
[ 2.856532] Copyright (c) 1999-2000 LSI Corporation
[ 2.856895] Fusion MPT SPI Host driver 3.04.12
[ 2.888336] mptspi 0000:00:18.0: PCI INT A -> GSI 17 (level, low) -> IRQ 17
[ 2.943744] mptbase: iocB: Initiating bringup
[ 2.955088] Floppy drive(s): fd0 is 1.44M
[ 2.955626] pcnet32.c:v1.35 21.Apr.2000 tshogend@alpha.franken.de
[ 2.956004] pcnet32 0000:02:00.0: PCI INT A -> GSI 10 (level, low) -> IRQ 10
[ 2.956403] pcnet32: PCnet/PCI II 79C970A at 0x2000, 00:0c:29:e7:af:22 assigned
IRQ 10:
[ 2.956923] eth0: registered as PCnet/PCI II 79C970A
[ 2.957064] pcnet32: 1 cards found.
[ 2.969604] FDC 0 is a post-1991 02077
[ 3.020607] iocB: LSI53C1030 B0: Capabilities={Initiator}
    
```

Then, the Nuxeo application automatically starts.




When the Nuxeo application is started, it displays the address at which it is available.



3. In your browser, type the indicated address.

The login page is displayed : Log into the application using the **Administrator** user name and the **Administrator** password. Once logged with superuser credentials, you can start **creating regular users and import digital assets**. See the **User Guide** to discover all Nuxeo DAM features.

 For system administration, there is no password for root. You have to log in using nuxeo/nuxeo (user/password) then use "sudo".

Download



Download this documentation in PDF.

Detailed install instructions

- Some requirements before you start: check java version and install it if needed.
- Set up related software: install the possible external software you may need for a comprehensive experience of Nuxeo DAM.
- See the supported File Formats

Join the Nuxeo community

- Use our [discussion forum](#) to share your experience, connect to other users and get help.
- Subscribe to the [ECM list](#) to stay informed about the evolution of the platform.
- Follow us on [Twitter](#).

Hardware and Software requirements

Nuxeo DAM runs in a large variety of technical environments. The following list delineates the currently working systems for the installation and operation of Nuxeo DAM. Below is the list of required and recommended environments:

- Requirements
 - [Check your Java version](#)
 - [Install Java](#)
 - [For Windows users](#)
 - [For Linux users](#)
 - [For Mac OS users](#)
- Recommendations
 - [Hardware recommendations](#)
 - [Default configuration](#)
 - [For optimal performances](#)
 - [Known working configurations](#)
 - [OS](#)
 - [JVM](#)
 - [Storage backends](#)
 - [LDAP](#)
 - [Browsers](#)

Requirements

All you need for a quick start is a **Sun Java Development Kit (JDK)** (*a JRE is not enough*). As of Nuxeo EP 5.4 and the applications based on it such as Nuxeo DM 5.4 or Nuxeo DAM 1.2, **Java 6** (also called Java 1.6) is required.



We currently support Sun's JDK, don't hesitate to contact us if you need us to support a JDK from another vendor.

Check your Java version

To check that you have the right version of Java

1. Open a terminal:
 - on Linux or Mac OS X: open a terminal.
 - on Windows: press "windows" key + r, type "cmd" (or "command") in the run window and press "OK" or open the "Prompt command" from "Start > Programs > Accessories" menu.
2. Type "java -version" and press "Enter".
If Java is correctly installed on your computer, the name and version of your Java virtual machine is displayed:

```
$ java -version
java version "1.6.0_20"
Java(TM) SE Runtime Environment (build 1.6.0_20-b02-279-10M3065)
Java HotSpot(TM) 64-Bit Server VM (build 16.3-b01-279, mixed mode)
```

If Java is not installed on you computer, it fails to display the Java version. Then, you need to install Java (see below).
If Java is installed but not included in the PATH, it fails to find the Java command. Then, you need to add \$JAVA_HOME/bin/ in your PATH (see [How do I set or change the PATH system variable?](#)).

Install Java

For Windows users

If the required version of Java is not installed on your computer:

1. [Download it from Sun website](#) and choose the appropriate platform for your hardware and Windows version.
2. Run the downloaded .exe file and follow the instructions displayed.

For Linux users

On a modern Linux distribution, you can now install Sun Java 6 with the packaging system of your distribution (using rpm, apt, yum, etc.).

If the JDK from Sun is not available for your OS, you can still [download it from Sun website](#).



Since Ubuntu 10.4 (Lucid Lynx), sun-java-6 is available from partners software sources (apt repositories).

For Mac OS users

An appropriate version of Java should already be installed on your computer if you are using Snow Leopard (Java 6).

Recommendations

Hardware recommendations

Nuxeo applications are designed to be scalable and can thus to be deployed on many servers. They can be installed on only one server for a start, and can also easily be installed on many servers. The constant is that there is the need to have one modern server with good performances. Then the other servers can be more lower-end.

So the numbers below are given for the one needed high-end server.

- RAM: 2 GB is the minimum requirement for using Nuxeo,
- CPU: Intel Core 2 or equivalent and better.
You might want to avoid machines from the Intel Pentium 4 Xeon series since some models have a too small amount of cache. This impairs performance greatly compared to other CPU architecture of the same generation. (Intel Pentium 4 servers are quite widespread because of an attractive price policy.)
- Storage (disk) space: the minimum Nuxeo installation, along with the needed server and libs, takes something between 200 MB and 280 MB on a filesystem. Then, the final size will of course depend on the amount of data that will be stored in Nuxeo. A safe bet (until we provide better numbers) is to consider data space ratio of 1.5 GB to 2 GB.

Default configuration

The default persistence configuration is lightweight and easy to use, but it is not made for performance.

Nuxeo DAM uses:

- H2 for SQL Data (directories, JBPM, Relations ...),
- Filesystem persistence with VCS for the Document repository.

For optimal performances

- Linux 64 bits,
- PostgreSQL 8.4 or 9.0,
Use PostgreSQL for document repository and all other services.



With Nuxeo EP 5.1 or 5.2, configure the document repository to externalize the blobs to filesystem.

- Have plenty of RAM (>= 4 GB).

Known working configurations

OS

- Debian GNU/Linux 5.0 Lenny
- Linux Ubuntu 32 and 64 bits: Edgy Eft (6.10), Feisty Fawn (7.04), Gutsy Gibon (7.10), Hardy Heron (8.04 LTS), Intrepid Ibex (8.10), Jaunty Jackalope (9.04), Karmic Koala (9.10), Lucid Lynx (10.04 LTS), Maverick Meerkat (10.10).
- Linux Mandriva 2008.1
- Unix
- Mac OS X Leopard (10.5), Snow Leopard (10.6)
- Microsoft Windows 2000, Windows 2003 server 32 and 64 bits, Windows XP, Windows 7

JVM

- Sun JDK 6, 64 bits recommended especially on Windows environment.

Storage backends

Different backends may be set as well for Nuxeo Core repository as for all other Nuxeo services that persist data. Here is a list of known working backends:

- PostgreSQL 8.3, 8.4 or 9.0
- MySQL 5.1
- Oracle 10g R2 (10.2.0.5) or 11g R2 (11.2.0.1)
- Microsoft SQL Server 2005
- H2 (this is the default embedded database)

LDAP

- OpenLDAP
- OpenDS
- Microsoft Active Directory

Browsers

Nuxeo applications can be used with the browsers below.

- IE 7 and greater
- Firefox 3.5 and greater
- Google Chrome 3 and greater
- Safari 4 and greater



Browser extensions for Drag & Drop and Live Edit are available for Internet Explorer and Firefox only.

Currently Supported File Formats

Nuxeo DAM supports a large number of file formats. This list is continuously updated as support for new file formats is available.

Format	Import in DAM	Mimetype recognition	Thumbnail & preview	Metadata Extraction	Transcode, delivery, watermarking
Pictures					

JPG	X	X	X	X	X
PNG	X	X	X	X	X
GIF	X	X	X	X	X
RAW	X	X	X	X	X
JPG2000	X	X	X	X	
TIF	X	X	X	X	X
BMP	X	X	X		X
PSD	X	X	X		X
AI	X				
EPS/PS	X	X			
PCX	X				
PICT	X				
SVG	X				
WMF	X				
EMF	X				
QXD	X				
INDD	X				
Video					
ogg	X	X	X (only preview)		
avi (divx, ...)	X	X	X (only preview)		
mp4	X	X	X (only preview)		
flv/fla	X	X	X (only preview)		
QT/mov	X	X**	X**		
mpeg/mpg/mpe	X	X**	X**		
WMV	X				
swf	X				
Audio					
ogg	X	X	X (only preview)		
mp3	X	X	X (only preview)		
wav	X	X	X (only preview)		
m4a/aac	X	X	X (only preview)		
ac3	X				
aif/aiff/ aifc	X				
au/snd	X				
asf	X				
Office					
pdf	X	X	X (only preview)		X
Microsoft Office (c)	X	X	X (only preview)		X

Open Office	X	X	X* (only preview)		X
RTF	X	X	X (only preview)		X
Microsoft Access (c)	X				
Microsoft publisher (c)	X				

*Client browser must have the associated plugin installed

** with streaming service enabled

Set up related software

Nuxeo DAM uses external software for some features. They need to be installed on the server in addition to Nuxeo DAM.

Here is the list of additional resources you may want to install:

- OpenOffice.org and pdftohtml: used for web preview and annotations of office documents
- ImageMagick: used for preview and tiling of picture documents
- Ffmpeg: for Video features
- Gimp and UFRaw: for RAW format images

Under Debian or Ubuntu, all of this can be installed by the following command:

```
sudo apt-get install sun-java6-jdk imagemagick ufraw poppler-utils openoffice.org
ffmpeg
```

Set up OpenOffice.org and pdftohtml for preview and annotations on Office documents

Installing OpenOffice/LibreOffice and pdftohtml on the server is only required if you need to use preview (and then possibly annotations) on PDF and office documents.

1. Download and install the following optional components:
 - PDFtoHTML from <http://sourceforge.net/projects/pdftohtml/files/> (necessary for PDF documents preview and annotations)
 - OpenOffice.org 3.x or greater. Available from <http://www.openoffice.org/> (necessary for office documents preview and annotations)
Or LibreOffice 3.x or greater. Available from <http://www.libreoffice.org/> (necessary for office documents preview and annotations)
2. Start the OpenOffice/LibreOffice server (on a single line):

```
soffice.exe -headless -nofirststartwizard
-accept="socket,host=localhost,port=8100;urp;StarOffice.Service"
```



If OpenOffice/LibreOffice is already installed on your server, Nuxeo applications come with a daemon that should automatically start it. More information about the daemon configuration below.



If using LibreOffice, you have to add the path to the executable in your nuxeo.conf: `jod.office.home=/path/to/libreoffice`.

3. Restart the server after launching OpenOffice/LibreOffice server.

More information about the Nuxeo Office daemon

The deprecated OOoDaemonService has been replaced by OOoManagerService. The configuration for the new service can be found in `$NUXEO_HOME/templates/common/config/ooo-manager-config.xml`

Set up ImageMagick for picture tiling features


The image tiling used in the preview of large images, and so for annotations, needs the installation of the [ImageMagick](#) software. Please see Nuxeo-Book chapter [about "Image tiling"](#). Requirements (ie: ImageMagick 6.3.7 or later) are defined in the installation section.

Set up ffmpeg


To enable video features, you must install ffmpeg on the server. This is required from version 1.1 of Nuxeo DAM, not for Nuxeo DAM 1.0.

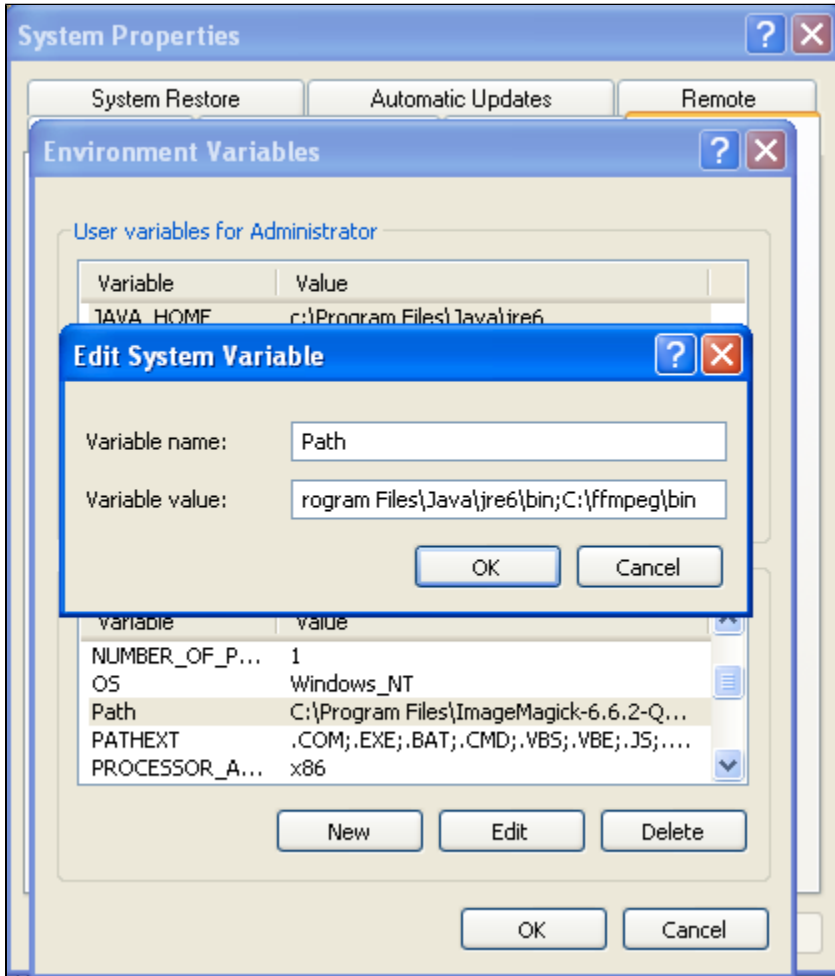
To install ffmpeg:

1. Download ffmpeg from <http://ffmpeg.arrozcru.org/autobuilds/>.
2. Extract the ffmpeg archive into a new folder named `C:\ffmpeg` for instance.

 The archives provided by this website should be decompressed with: 7-Zip.

3. On Windows, you need to add the ffmpeg environment variable:
 - Right click on the "My Computer" icon and click on **Properties**.
 - On the "Advanced" tab, edit the `Path` system variable and add `;C:\ffmpeg\bin`.

 Don't forget the semicolon at the end of existing values.



Set up Gimp and UFRaw

To enable RAW formats in a Nuxeo application, you need to download and install the following optional components:

- Gimp (needed for UFRaw) 2.6.7 or greater from [Gimp Win at SourceForge](#)
- UFRaw from [UFRaw at SourceForge](#)

Nuxeo DAM and Nuxeo DM

Nuxeo DAM and Nuxeo DM can share the same repository, so that you can access documents and files managed in a Nuxeo DM repository from Nuxeo DAM without switching applications.

Here you will find documentation about how to configure Nuxeo DAM and Nuxeo DM so that they can work together.

- [Working with the same repository](#)

Related versions of Nuxeo DAM and Nuxeo DM that work well together:

- Nuxeo DAM 1.1 - Nuxeo DM 5.3.2
- Nuxeo DAM 1.2 - Nuxeo DM 5.4.0.1
- Nuxeo DAM 1.3 - Nuxeo DM 5.4.1

Working with the same repository

Deployment

To deploy Nuxeo DAM and Nuxeo DM on the same repository, the clustering needs to be enabled on the 2 servers. The documentation to enable the clustering can be found here: [Nuxeo clustering configuration](#)

The following jars need to be deployed on Nuxeo DM:

- nuxeo-dam-api,
- nuxeo-dam-core,
- nuxeo-dam-lang,
- nuxeo-dam-webapp-common,
- nuxeo-platform-audio-core
- and all nuxeo-platform-video-*

You can copy them from Nuxeo DAM to ease the deployment.

Features

In the Default Domain, an Assets Library folder is available where the assets visible in Nuxeo DAM will be stored.

The folders structure is the following:

```
Assets Library
  `-- Import Folder
      |-- Import Folder
      `-- Import Set
          |-- Picture file
          |-- Video file
          `-- Folder
              |-- Audio file
              `-- Office File
```

All the specific Nuxeo DAM metadata are available on the assets visible in Nuxeo DM (and can be modified).