



Nuxeo Document Management 5.3.1

Installation Guide

Table of Contents

1. Nuxeo DM 5.3.1 quick installation Guide	3
1.1 Some requirements before you start	7
1.2 Install Nuxeo DM	8
1.3 Set up additional resources	9

Nuxeo DM 5.3.1 quick installation Guide

Welcome to the Nuxeo DM Install Guide.

You have just downloaded Nuxeo DM, for instance from the download page on [nuxeo.com](#). Now how do you try it on your computer?

Nuxeo DM can be installed on any computer, providing that [Java is installed](#). Installing Nuxeo DM takes 3 simple steps:

1. Install the downloaded package,
2. Start the server,
3. Go on Nuxeo DM in a browser.

See below to install Nuxeo DM on [Windows](#) and on [Mac OS and Linux](#).

Once Nuxeo DM is installed, you may want to [install some additional resources](#) used for some DM features.



For more information on how to install and configure your Nuxeo server, see the [Nuxeo configuration page](#).

Install Nuxeo DM on Windows

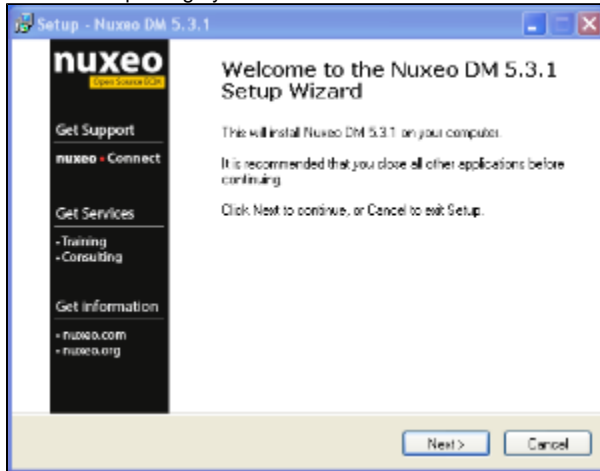
Depending on the distribution you downloaded (JBoss or Tomcat), you have:

- a .exe file (JBoss windows specific installer)
- a .zip file.

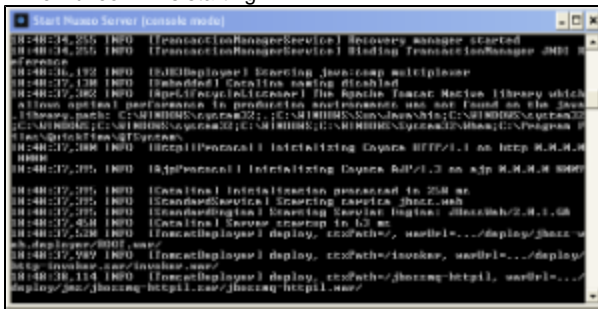
Install a JBoss Nuxeo DM

Here are the steps to install a JBoss Nuxeo DM.

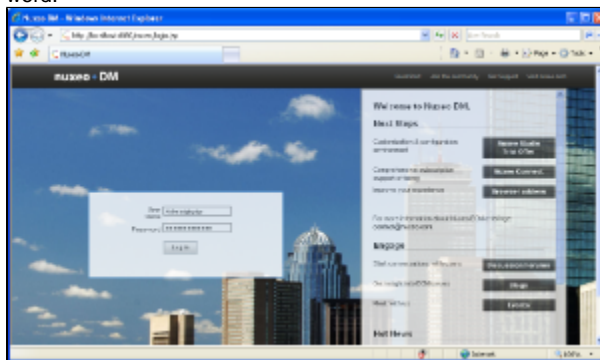
1. Double-click on the .exe installer you downloaded and follow the instructions displayed to install the package you downloaded.




2. To start the server, in Programs/Nuxeo DM x.x.x, click on :
 - **Start Nuxeo Server** if you want a console to be displayed and see the logs while Nuxeo DM is starting



- **Start Nuxeo Service** if you do not want to have a console window opened. Starting takes between 30 sec and several minutes, depending on your hardware.
3. Open a browser and type the URL <http://localhost:8080/nuxeo/>.
 4. Log in to Nuxeo DM using the **Administrator** user name and the **Administrator** pass word.



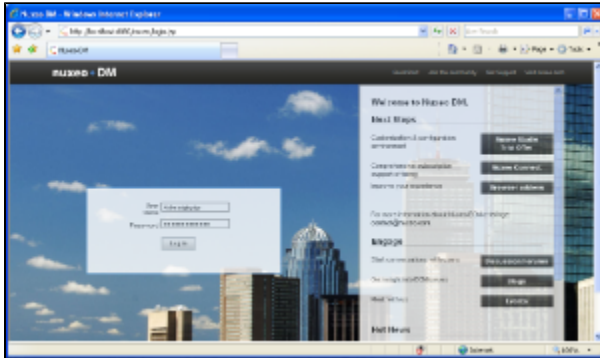
Once logged with superuser credentials, you can start creating regular users and organize your folders.

 See the [User Guide](#) to discover all Nuxeo DM features.

Install a tomcat Nuxeo DM

Here are the steps to install a tomcat Nuxeo DM.

1. Unzip the .zip file at the root of C:.
2. Start Nuxeo by double-clicking on `startup.bat` in the folder `C:\Nuxeo DM x.x.x\bin`.
Starting takes between 30 sec and several minutes, depending on your hardware.
3. Open a browser and type the URL `http://localhost:8080/nuxeo/`.
4. Log in to Nuxeo DM using the **Administrator** user name and the **Administrator** pass word.



Once logged with superuser credentials, you can start [creating regular users](#) and organize your folders.



See the [User Guide](#) to discover all Nuxeo DM features.

Install Nuxeo DM on Mac OS and Linux

To install Nuxeo DM on Mac OS or Linux, you need the .zip package.

1. Decompress it the .zip package:
 - Double click on the .zip file,
 - run unzip in a terminal.
2. Launch a terminal.
3. Start the server using the appropriate script for your distribution:
 - If you used the zipped JBoss distribution, run `./bin/run.sh` from the directory where you have installed the Nuxeo server.
 - If you used the zipped Tomcat distribution, run `./bin/catalina.sh run`.

✔ You can also drag and drop the start script in the terminal and press Enter.



Starting takes between 30 sec and several minutes, depending on your hardware and the distribution you have chosen to install.

4. Open a browser and type the URL <http://localhost:8080/nuxeo/>.
5. Log in to Nuxeo DM using the **Administrator** user name and the **Administrator** pass word.



Once logged with superuser credentials, you can start [creating regular users](#) and work in Nuxeo DM.

✔ See the [User Guide](#) to discover all Nuxeo DM features.

Download



Download this documentation in PDF.

Detailed install instructions

- Some requirements before you start: check java version and install it if needed
- Install Nuxeo DM: Install your Nuxeo package and start it
- Set up additional resources: install the possible external software you may need for a comprehensive experience of Nuxeo.

Join the Nuxeo community

- Use our [discussion forums](#) to share your experience, connect to other users and get help
- Subscribe to the [ECM list](#) to stay informed about the evolution of the platform
- Follow us on [LinkedIn](#), [Facebook](#) and [Twitter](#).

Some requirements before you start

Nuxeo DM can run on Windows, Mac OS X and Linux distributions.

Nuxeo DM is available in several packages. Here are the packages you can use for each OS:

- zip package (.zip extension): can be used to run on the 3 OS
- MS Windows setup (.exe extension): for Windows only

Nuxeo DM is fully based on Java. This means that Nuxeo can easily be deployed on any platform with a Java Runtime Environment (JRE). It is required to use either Java 1.5 (also called Java 5) or Java 1.6 (also called Java 6). Java 6 is the preferred version, if you have the choice.



The Java Runtime Environment (JRE) is enough to run the product, the Java Software Development Kit (SDK) is only necessary if you plan to do some development.



We recommend Sun's JRE and don't support other JRE. Don't hesitate to contact us if you need us to support a JRE from another vendor, such as JRockit from Oracle or the IBM JRE.

Check your Java version

To check that you have the right version of Java

1. Open a terminal :
 - on Linux or Mac OS: open a terminal.
 - on Windows: press "windows" key + r, type "cmd" (or "command") in the run window and press "OK" or open the "Prompt command" from "Start > Programs > Accessories" menu.
2. Type "java -version" and press "Enter".

If Java is correctly installed on your computer, the name and version of your Java virtual machine is displayed:

```

Terminal — bash — 80x24
Last login: Tue May 11 08:20:56 on console
iBlonde:~ solenguitter$ java -version
java version "1.6.0_17"
Java(TM) SE Runtime Environment (build 1.6.0_17-b04-248-10M3025)
Java HotSpot(TM) 64-Bit Server VM (build 14.3-b01-101, mixed mode)
iBlonde:~ solenguitter$
    
```

If Java is not installed on you computer, it fails to display the java version. Then, you need to install Java. If Java is installed but not included in the PATH, it fails to find the java command. Then, you need to add \$JAVA_HOME/bin/ in your PATH (see [How do I set or change the PATH system variable?](#))

Install Java

For Windows users

If the required version of Java is not installed on your computer:

1. Download it from Sun website: choose
 - "Java SE Runtime Environment"
 - then, the appropriate configuration for your hardware and Windows version.
2. Run the downloaded .exe file.

For Linux users

On a modern Linux distribution, you can now install Java 6 with the packaging system of your distribution (using rpm, apt, yum, etc.).

If a JRE or SDK from Sun is not available for your OS, you can still download it from Sun using the same instructions as for Windows users.

For Mac OS users

An appropriate version of Java should already be installed on your computer if you are using either Mac OS X Leopard (Java 5) or Snow Leopard (Java 6).

Run `"export JAVA_HOME=/System/Library/Frameworks/JavaVM.framework/Home"` after having checked it's actually there.

Install Nuxeo DM

Once you have checked that you have the required version of Java installed on your computer, you need to install Nuxeo.

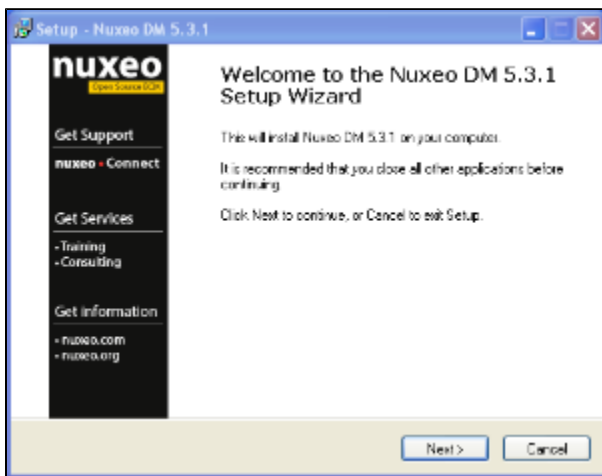
Installing Nuxeo DM takes 3 steps:

1. install the downloaded package,
2. start the server,
3. connect to the application in a browser.

Install Nuxeo DM packages

Nuxeo DM is available in different packages. Here is the way to install each package:

- zip package (.zip extension): just decompress it (double click on the file or run unzip from the command line).
- MS Windows setup (.exe extension): run the setup by double-clicking on it and follow instructions.



Start Nuxeo DM

Nuxeo DM is available in different distributions:

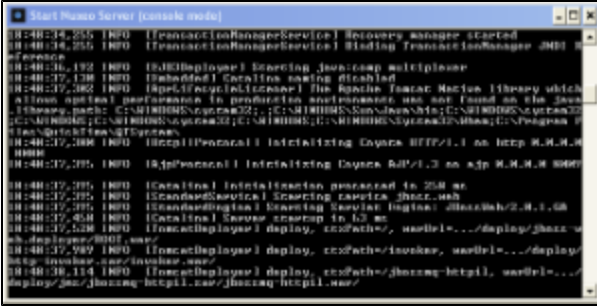
- Jboss
- Tomcat

Each distribution has a different start script.

Windows

If you used the Windows Setup (.exe) installer, in "Programs > Nuxeo DM x.x.x", click on :

- **Start Nuxeo Server** if you want a console to be displayed and see the logs while Nuxeo DM is starting



- **Start Nuxeo Service** if you do not want to have a console window opened. Starting takes between 30 sec and several minutes, depending on your hardware and the distribution you have chosen to install.

✔ You can also start the server from the command line, using the following scripts:

- "bin\startup.bat" (Tomcat distribution),
- "bin\jbossctl.bat start" (JBoss distribution).

Linux / Mac OS / Solaris

To start Nuxeo DM on Linux, Mac OS or Solaris:

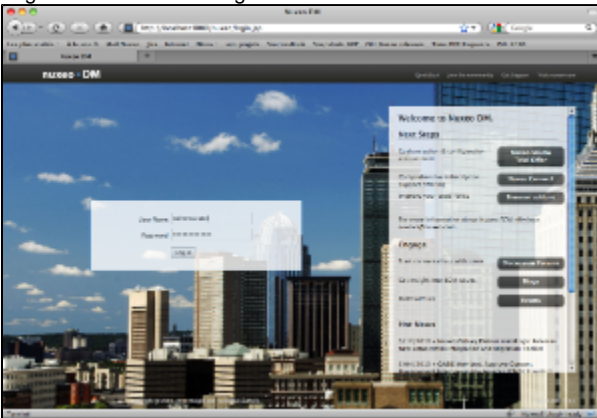
1. Launch a terminal.
2. Start the server using the appropriate script for your distribution:
 - If you used the zipped JBoss distribution, run `./bin/run.sh` from the directory where you have installed the Nuxeo server.
 - If you used the zipped Tomcat distribution, run `./bin/catalina.sh run`

✔ You can also drag and drop the start script in the terminal and press "Enter".

Connect to the server using your web browser

Once the server has started (this can take between 30 sec and several minutes, depending on your hardware and the distribution you have chosen to install), you can connect to the application in a browser.

1. Type the URL "http://localhost:8080/nuxeo/".
2. Log in to Nuxeo DM using the **Administrator** user name and the **Administrator** password.



Once logged with superuser credentials, you can start [creating regular users](#) and organize your folders.

The [Nuxeo DM user guide](#) will help you figure out the main features of Nuxeo DM.

Set up additional resources

Nuxeo DM uses external software for some features. They need to be installed on the server in addition to Nuxeo DM.

Here is the list of additional resources you may want to install:

- [OpenOffice.org](#): used for web preview and annotations of office documents
- [pdftohtml](#): used for web preview of PDF documents

- ImageMagick: used for preview, tiling and rotation of picture documents

Set up OpenOffice.org for preview and annotation on Office documents

OpenOffice.org is used to handle PDF transformation of some documents. This means you need to install OpenOffice on the server to have the PDF, preview and annotation features enabled.



If OpenOffice is already installed on your server, Nuxeo comes with a daemon that should automatically start it.

You can find more information about managing the daemon [here](#).

Configuration file for the daemon is `config/ooo-config.xml` (e.g. `server/default/deploy/nuxeo.ear/config/ooo-config.xml` under JBoss).

If you need information about installing OpenOffice or want to manage OpenOffice server without the daemon, you can see [section 45.1 of the Nuxeo-Book](#).

Set up pdftohtml for PDF preview

The preview of PDF documents requires the installation of the [pdftohtml](#) software.

Please see Nuxeo-Book chapter [about "PDF documents"](#).

Set up ImageMagick for picture tiling features

The image tiling used in the preview of large images, and so in the Annotations module, needs the installation of the [ImageMagick](#) software.

Please see Nuxeo-Book chapter [about "Image tiling"](#).

Requirements (ie: ImageMagick 6.3.7 or later) are defined in the installation section.