



Nuxeo Document Management 5.3.2

Installation Guide

Table of Contents

1. Nuxeo DM 5.3.2 quick installation Guide	3
1.1 Some requirements before you start (5.3.2)	9
1.2 Set up additional resources (5.3.2)	10
1.3 Advanced configuration (5.3.2)	11

Nuxeo DM 5.3.2 quick installation Guide

Welcome to the Nuxeo DM Install Guide.

You have just downloaded Nuxeo DM, for instance from the download page on [nuxeo.com](#). Now how do you try it on your computer?

Nuxeo DM can be installed on any computer, providing that [Java is installed](#). Installing Nuxeo DM takes 3 simple steps:

1. Install the downloaded package,
2. Start the server,
3. Go on Nuxeo DM in a browser.

See below to install Nuxeo DM on [Windows](#) and on [Mac OS and Linux](#).

Once Nuxeo DM is installed, you may want to [install some additional resources](#) used for some DM features.

In this section, we explain how to install the different Nuxeo DM packages available for download:

- [Install Nuxeo DM on Mac OS and Linux](#)
 - [Install a JBoss or Tomcat Nuxeo DM with ZIP archive](#)
 - [Install a JBoss or Tomcat Nuxeo DM with Debian installer](#)
 - [Install a JBoss or Tomcat Nuxeo DM with APT sources for Debian](#)
- [Install Nuxeo DM on Windows](#)
 - [Install a JBoss or Tomcat Nuxeo DM with Windows installer](#)
 - [Install a JBoss or Tomcat Nuxeo DM with ZIP archive](#)
- [Connect to the server using your web browser](#)
- [Install Nuxeo DM virtual machine image](#)



For more information on how to install and configure your Nuxeo server, see the [Nuxeo configuration page](#).

Install Nuxeo DM on Mac OS and Linux

Depending on the distribution you downloaded, you have:

- a .zip file (simple archive, multi-OS compliant)
- a .deb file (Linux Debian specific installer)
Starting Nuxeo server takes between 30 sec and several minutes, depending on your hardware and the distribution you have chosen to install.

Install a JBoss or Tomcat Nuxeo DM with ZIP archive

To install Nuxeo DM on Mac OS or Linux, you need the .zip package.

1. Unzip the downloaded ZIP file.
2. Launch a terminal and go to your installation directory.
3. Make the scripts executable (some ZIP tools lose the executable bit):

```
chmod +x *.sh *ctl
```

4. Start the server using nuxeoctl script:

```
./nuxeoctl start
```

5. On Mac OS X, you can also use convenient commands from the Finder:
 - a. Make the .command files executable:

```
chmod +x *.command
```

- b. Click from the Finder on "Start Nuxeo.command" or "Stop Nuxeo.command"



You can also drag and drop the start script in the terminal and press Enter.

Install a JBoss or Tomcat Nuxeo DM with Debian installer

Here are the steps to install a Nuxeo DM using the Debian installer.

1. Double-click on the .deb installer you downloaded and follow the instructions displayed.
2. Nuxeo is installed as a service. To start or stop it, use the invoke-rc.d command on nuxeo-dm service from a terminal:

```
sudo invoke-rc.d nuxeo-dm  
\[start\|stop\|status\|restart\]
```

Install a JBoss or Tomcat Nuxeo DM with APT sources for Debian

Here are the steps to install a Nuxeo DM using the APT sources for Debian.

1. Activate partner sources for JDK Sun install (click on "System/Administration/Software Sources" then check the "multiverse" source)
2. Then either use your preferred graphical interface (Synaptic, ...)
 - a. add "deb <http://apt.nuxeo.org/> lucid releases" to the software sources
 - b. click on nuxeo-dm-jboss (apt://nuxeo-dm-jboss) or nuxeo-dm-tomcat (apt://nuxeo-dm-tomcat)
3. either issue the following commands in a terminal:

```
sudo add-apt-repository "deb
http://apt.nuxeo.org/ lucid releases"
sudo apt-get update
sudo apt-get install nuxeo-dm-jboss
# or
sudo apt-get install nuxeo-dm-tomcat
```

4. Follow the instructions displayed.
5. Nuxeo is installed as a service. To start or stop it, use the invoke-rc.d command on nuxeo-dm service from a terminal:

```
sudo invoke-rc.d nuxeo-dm
\[start\|stop\|status\|restart\]
```

Install Nuxeo DM on Windows

Depending on the distribution you downloaded you have:

- a .exe file (Windows specific installer)
- a .zip file (simple archive, multi-OS compliant)

Starting takes between 30 sec and several minutes, depending on your hardware.

Install a JBoss or Tomcat Nuxeo DM with Windows installer

Here are the steps to install a Nuxeo DM using the Windows installer.

1. Double-click on the .exe installer you downloaded and follow the instructions displayed.



2. To start the server, in Programs/Nuxeo DM, click on **Nuxeo DM** then use the buttons in this Nuxeo control panel to start/stop the server and show/hide the logs.



If you installed Nuxeo as a Windows service (automatically done when using the Nuxeo installer for Windows), you can use the service for starting the server instead of the Nuxeo control panel.

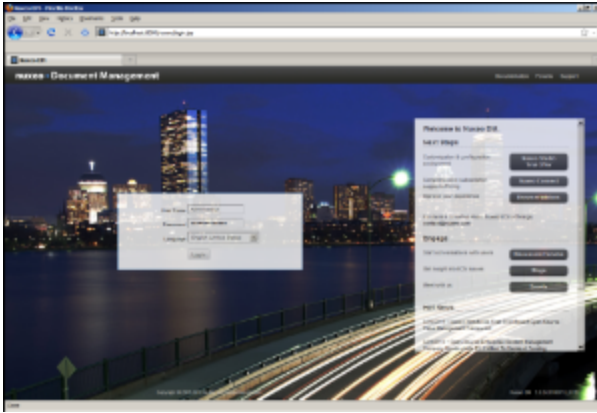
Install a JBoss or Tomcat Nuxeo DM with ZIP archive

Here are the steps to install a Nuxeo DM using the ZIP archive.

1. Unzip the downloaded ZIP file at the root of C:.
2. Start Nuxeo by double-clicking on NuxeoCtl.exe in the folder C:\Nuxeo DM x.x.x\bin\.

Connect to the server using your web browser

1. Open a browser and type the URL <http://localhost:8080/nuxeo/>.
2. Log into Nuxeo EP using the **Administrator** user name and the **Administrator** password.



Once logged with superuser credentials, you can start [creating regular users](#) and organize your folders.

Install Nuxeo DM virtual machine image

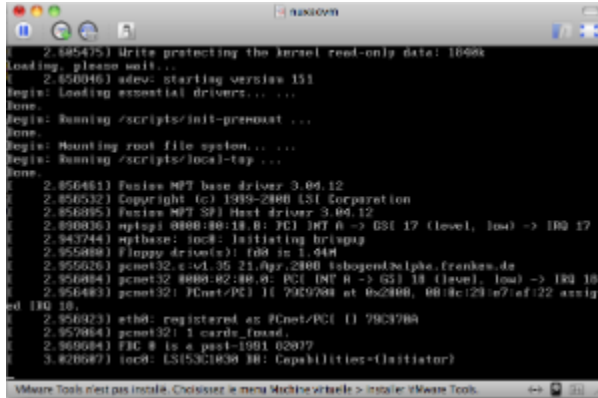
Nuxeo DM is available in ready-to-use virtual machine images from [nuxeo.com](#). VM images are available for VMWare and Virtual Box. They provide a full environment (OS, database...) and all required dependencies.

To install the Nuxeo DM virtual machine image and start Nuxeo:

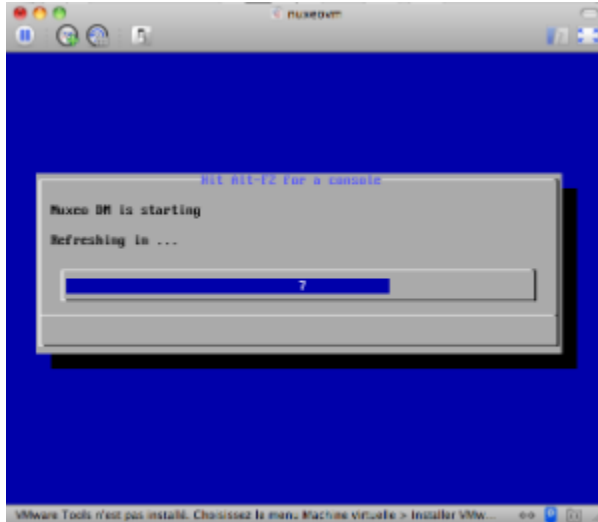
1. Unzip the downloaded package.
You get a folder with the required file for the virtual machine image to run.

2. Start the virtual machine image in your virtual machine application by double-clicking on it.

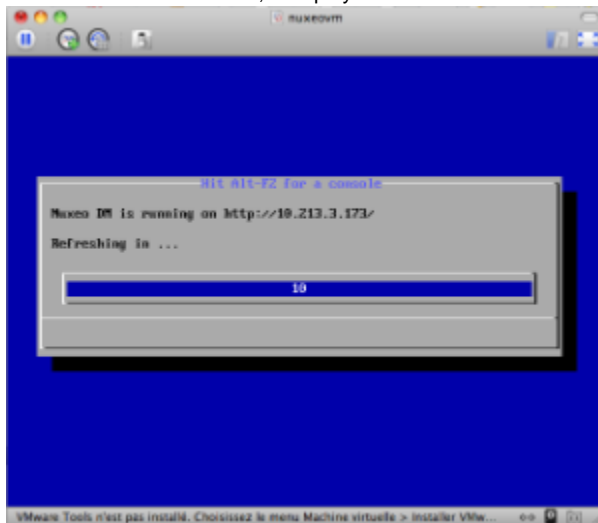
The VM image starts.



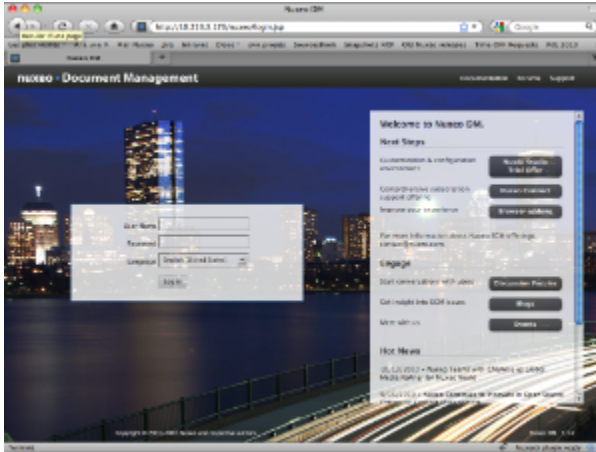
Then, Nuxeo DM automatically starts.




When Nuxeo DM is started, it displays the address at which it is available.



- In your browser, type the indicated address.
The Nuxeo DM login page is displayed.



- Log into Nuxeo DM using the **Administrator** user name and the **Administrator** password.

 See [Nuxeo DM User Guide](#) to discover all Nuxeo DM features.

Download

 [Download this documentation in PDF.](#)

Detailed install instructions

- [Some requirements before you start \(5.3.2\)](#): check Java version and install it if needed.
- [Set up additional resources \(5.3.2\)](#): install the possible external software you may need for a comprehensive experience of Nuxeo.
- [Advanced configuration \(5.3.2\)](#): Customize your Nuxeo install, configure for production.

Join the Nuxeo community

- Use our [discussion forums](#) to share your experience, connect to other users and get help
- Subscribe to the [ECM list](#) to stay informed about the evolution of the platform
- Follow us on [LinkedIn](#), [Facebook](#) and [Twitter](#).

Some requirements before you start (5.3.2)

Nuxeo DM can run on Windows, Mac OS X and Linux distributions.

Nuxeo DM is available in several packages. Here are the packages you can use for each Operating System:

- zip package (.zip extension): can be used to run on all OS.
- MS Windows setup (.exe extension): for Windows only.
- Debian package (.deb extension): for Linux only.

Nuxeo DM is fully based on Java. This means that Nuxeo can easily be deployed on any platform with a Java Development Kit (JDK). It is required to use either Java 1.5 (also called Java 5) or Java 1.6 (also called Java 6). Java 6 is the preferred version, support for Java 5 is likely to be dropped in a future release...

 We recommend Sun's Java and don't support other Java.

We've also had success running Nuxeo DM on the OpenJDK 6 (the default version of Java installed on most Linux distributions). We don't consider the OpenJDK as a supported platform yet, but we welcome your feedback if you encounter any trouble with it.

Don't hesitate to contact us if you need us to support a JRE from another vendor, such as JRockit from Oracle or the IBM JRE.

It won't work with any previous release of Java (e.g. Java 1.4).

Check your Java version

To check that you have the right version of Java

1. Open a terminal :
 - on Linux or Mac OS: open a terminal.
 - on Windows: press "windows" key + r, type "cmd" (or "command") in the run window and press "OK" or open the "Prompt command" from "Start > Programs > Accessories" menu.
2. Type "java -version" and press "Enter".

If Java is correctly installed on your computer, the name and version of your Java virtual machine is displayed:

```

Terminal — bash — 80x24
Last login: Tue May 11 08:20:56 on console
iBlonde:~ solengutter$ java -version
java version "1.6.0_17"
Java(TM) SE Runtime Environment (build 1.6.0_17-b04-248-10M3025)
Java HotSpot(TM) 64-Bit Server VM (build 14.3-b01-101, mixed mode)
iBlonde:~ solengutter$
    
```

If Java is not installed on you computer, it fails to display the java version. Then, you need to install Java.
 If Java is installed but not included in the PATH, it fails to find the java command. Then, you need to add \$JAVA_HOME/bin/ in your PATH (see [How do I set or change the PATH system variable?](#))

Install Java

For Windows users

If the required version of Java is not installed on your computer:

1. Download it from Sun website: choose
 - "Java SE Runtime Environment"
 - then, the appropriate configuration for your hardware and Windows version.
2. Run the downloaded .exe file.

For Linux users

On a modern Linux distribution, you can now install Java 6 with the packaging system of your distribution (using rpm, apt, yum, etc.).

If a JRE or SDK from Sun is not available for your OS, you can still download it from Sun using the same instructions as for Windows users.

For Mac OS users

An appropriate version of Java should already be installed on your computer if you are using Snow Leopard (Java 6).

Run "export JAVA_HOME=/System/Library/Frameworks/JavaVM.framework/Home" after having checked it's actually there.

Set up additional resources (5.3.2)

Nuxeo DM uses external software for some features. They need to be installed on the server in addition to Nuxeo DM.

Here is the list of additional resources you may want to install:

- OpenOffice.org: used for web preview and annotations of office documents
- pdftohtml: used for web preview of PDF documents
- ImageMagick: used for preview, tiling and rotation of picture documents

Set up OpenOffice.org for preview and annotation on Office documents

OpenOffice.org is used to handle PDF transformation of some documents. This means you need to install OpenOffice on the server to have the PDF, preview and annotation features enabled.



If OpenOffice is already installed on your server, Nuxeo comes with a daemon that should automatically start it.

You can find more information about managing the daemon [here](#).

Configuration file for the daemon is `config/ooo-config.xml` (e.g. `server/default/deploy/nuxeo.ear/config/ooo-config.xml` under JBoss).

If you need information about installing OpenOffice or want to manage OpenOffice server without the daemon, you can see [section 45.1 of the Nuxeo-Book](#).

Set up pdftohtml for PDF preview

The preview of PDF documents requires the installation of the [pdftohtml](#) software.

Please see Nuxeo-Book chapter [about "PDF documents"](#).

Set up ImageMagick for picture tiling features

The image tiling used in the preview of large images, and so in the Annotations module, needs the installation of the [ImageMagick](#) software.

Please see Nuxeo-Book chapter [about "Image tiling"](#).

Requirements (ie: ImageMagick 6.3.7 or later) are defined in the installation section.

Advanced configuration (5.3.2)



For more information on how to install and configure your Nuxeo server, see the [Nuxeo configuration page](#).