



Nuxeo Document Management 5.4

Installation Guide

Table of Contents

1. Nuxeo DM - Installation Guide	3
1.1 Some requirements before you start	9
1.2 Set up additional resources	10
1.3 Advanced configuration	11
1.4 Deploying Nuxeo DM on your (Amazon AWS) cloud	11

Nuxeo DM - Installation Guide

Welcome to the Nuxeo DM Install Guide!

You have just downloaded the 5.4 version of Nuxeo DM. Now how do you try it on your computer?

Nuxeo DM can be installed on any computer, providing that [Java is already installed](#).

Installing Nuxeo DM takes 3 simple steps:

1. Install the downloaded package,
2. Start the server,
3. Point your web browser to the Nuxeo DM home page (usually, <http://localhost:8080/nuxeo>) and use the "Administrator" user name and "Administrator" password (without quotes).

Once Nuxeo DM is installed, you may want to [install some additional resources](#) used for some DM features.

You may want more information about [advanced configuration](#).

In this section, we explain how to quickly install and start the different Nuxeo DM packages available for download:

- [How to Install Nuxeo DM on Windows](#)
 - [How to Install Nuxeo DM with the Windows installer](#)
 - [How to Install Nuxeo DM from the ZIP archive](#)
 - [How to start Nuxeo DM on Windows](#)
- [How to install Nuxeo DM on Linux](#)
 - [How to install Nuxeo DM from the ZIP package](#)
 - [How to Install Nuxeo DM from the APT repository for Debian and Ubuntu](#)
 - [How to start Nuxeo DM on Linux](#)
- [How to Install Nuxeo DM on Mac OS](#)
- [How to Install a Nuxeo DM virtual machine image](#)



By default, you cannot run two Nuxeo applications at the same time. If you want to run two Nuxeo applications at the same time (for instance a Nuxeo DM and a Nuxeo DAM), you need to [change the default port](#) used by the Nuxeo server.

How to Install Nuxeo DM on Windows

Depending on the distribution you downloaded, you should have:

- a .exe file (Windows specific installer)
- a .zip file (simple archive, multi-OS compliant)

How to Install Nuxeo DM with the Windows installer

Here are the steps to install a Nuxeo DM using the Windows installer.

To install the application using the Windows installer (.exe), double-click on the .exe installer you downloaded and follow the instructions displayed.



For applications based on Nuxeo EP 5.4.1 and 5.4.2

On Windows 7, because of rights issues, it is highly recommended to install your Nuxeo application at the root of C: in order for your application to restart correctly at the end of the [startup wizard steps](#).



You can then [start Nuxeo DM](#).

How to Install Nuxeo DM from the ZIP archive

Here are the steps to install a Nuxeo DM using the ZIP archive.

Unzip the .zip archive using your favorite tool.



On Windows, because of the limitation on paths length, it is recommended to extract the content of the archive at root of C: .

You can then [start Nuxeo DM](#).

How to start Nuxeo DM on Windows

1. Open the Nuxeo Control Panel.




Depending on how you installed your application, you can open the Nuxeo Control Panel in two different ways. See below for the appropriate command.

The Nuxeo Control Panel opens.

2. Click on the **Start** button.
Starting the Nuxeo server takes between 30 sec and several minutes, depending on your hardware and the distribution you have chosen to install.
When the server is started, the **Start** button becomes a **Stop** button.
3. Open a browser and type the URL <http://localhost:8080/nuxeo/>.
 - On Nuxeo DM 5.4.0 and 5.4.0.1, you can directly log in to your application the **Administrator** user name and the **Administrator** password and start using your application.
 - On Nuxeo DM 5.4.1, you need to set up your application's configuration using the displayed [startup wizard](#).

How to open the Panel Control

Nuxeo DM package	Command
.exe package (Windows installer) of Nuxeo DM 5.4+	In Programs/Nuxeo application, click on the Nuxeo application.
zip package of Nuxeo DM 5.4.0 and 5.4.0.1	In the folder C:\Nuxeo application\bin, double-click on nuxeoctl.exe.
zip package of Nuxeo DM 5.4.1 and next	In the folder C:\Nuxeo application\bin, double-click on nuxeoctl.bat.

 On Windows 7, you need to run the nuxeoctl.bat and Start Nuxeo.bat commands as an administrator if you haven't installed your Nuxeo application at the root of C: (for instance in C:\Program Files). To run them as an administrator, right-click on the command and click on "Run as administrator".

On Windows, it is possible to start Nuxeo as a service. Please report the [Install the application as a Windows service](#) page for guidelines and examples.

How to install Nuxeo DM on Linux

Depending on the distribution you downloaded, you should have:

- a .zip file (simple archive, multi-OS compliant),
- a .deb file (Linux Debian specific installer).

How to install Nuxeo DM from the ZIP package


1. Unzip the downloaded ZIP file using your favorite tool.
You can then [start Nuxeo DM](#).

How to Install Nuxeo DM from the APT repository for Debian and Ubuntu

Installing Nuxeo DM using the APT sources for Debian and Ubuntu installs and configures the application, but it also installs all required dependencies for an optimal use of the application.

You can either install Nuxeo DM using the OS graphical user interface or from the terminal.

Installing from the APT sources using the User graphical interface:

 This requires X11.

1. Click on "System/Administration/Software Sources".
2. [Activate multiverse and partner sources](#) for JDK Sun install. Multiverse is usually in the "Ubuntu Software" tab, and the partner sources are usually in the "Other Software" tab.
3. If running Ubuntu LTS, Nuxeo DM is published in the Canonical partner repository, so you can jump to step 5. For other Ubuntu versions, [download the Nuxeo key](#) and import it in the "Authentication" tab.
4. Add the Nuxeo APT repository: on the "Other Software" tab, add "deb <http://apt.nuxeo.org/lucid/releases>" to the sources.
5. Click on apt://nuxeo-dm.
6. Follow the instructions displayed.
If it's your first install, you can configure:
 - the bind address,
 - the port,
 - the database (a preconfigured PostgreSQL database is suggested by default).

The application is installed as a service. It is automatically started and set to automatically start at boot.

Installing from the terminal:

1. Add the Ubuntu partner repository:

```
sudo apt-add-repository "deb
http://archive.canonical.com/ubuntu lucid
partner"
```

If you're running Ubuntu LTS, Nuxeo DM is published in the Canonical partner repository, so you can jump to step 4.

For other Ubuntu versions, continue to the next steps.

2. Import the Nuxeo key:

```
wget -q -O- http://apt.nuxeo.org/nuxeo.key |
sudo apt-key add -
```

3. Add the Nuxeo APT repository.

```
sudo add-apt-repository "deb
http://apt.nuxeo.org/ lucid releases"
```



If you don't have `add-apt-repository`, which is a non-standard command, create a file named `/etc/apt/sources.list.d/nuxeo.list` and write into: `deb http://apt.nuxeo.org/ lucid releases`.

4. Update your APT cache.

```
sudo apt-get update
```

5. Install Nuxeo DM.

```
sudo apt-get install nuxeo-dm
```

6. Follow the instructions displayed.

If it's your first install, you can configure:

- the bind address,
- the port,
- the database (a preconfigured PostgreSQL database is suggested by default).

The application is installed as a service. It is automatically started and set to automatically start at boot.

How to start Nuxeo DM on Linux

1. Launch a terminal and go to your installation directory.
2. Start the server using the `nuxeoctl` script (located in the `bin` directory):

```
./bin/nuxeoctl gui
```



The command used to launch the Control Panel may not be executable by default. If it is the case, in the terminal go to the `bin` directory of Nuxeo and type the line below to be able to use it:

```
chmod +x *.sh *ctl
```

The Control Panel opens.

3. Click on the **Start** button.
Starting the Nuxeo server takes between 30 sec and several minutes, depending on your hardware and the distribution you have chosen to install.
When the server is started, the **Start** button becomes a **Stop** button.
4. Open a browser and type the URL <http://localhost:8080/nuxeo/>.
 - On Nuxeo DM 5.4.0 and 5.4.0.1, you can directly log in to your application the **Administrator** user name and the **Administrator** password and start using your application.
 - On Nuxeo DM 5.4.1, you need to set up your application's configuration using the displayed [startup wizard](#).

How to Install Nuxeo DM on Mac OS

To install Nuxeo DM on Mac OS, you need the `.zip` package.

Step 1: Install Nuxeo DM

1. Unzip the downloaded ZIP file using your favorite tool.

Step 2: Start Nuxeo DM

1. From the Finder, click on "Start Nuxeo.command". You can also drag and drop the start script in the terminal and press Enter.



The command may not be executable by default. If it is the case, in the terminal go to the `bin` directory of Nuxeo and type the line below:

```
chmod +x *.command
```

The Control Panel opens.

2. Click on the **Start** button.
Starting the Nuxeo server takes between 30 sec and several minutes, depending on your hardware and the distribution you have chosen to install.
When the server is started, the **Start** button becomes a **Stop** button.
3. Open a browser and type the URL <http://localhost:8080/nuxeo/>.
 - On Nuxeo DM 5.4.0 and 5.4.0.1, you can directly log in to your application the **Administrator** user name and the **Administrator** password and start using your application.
 - On Nuxeo DM 5.4.1, you need to set up your application's configuration using the displayed [startup wizard](#).

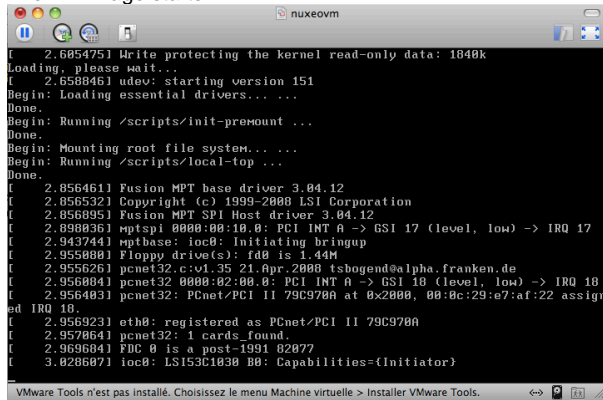
How to Install a Nuxeo DM virtual machine image

Nuxeo DM is available as ready-to-run virtual machine images from nuxeo.com. VM images are available for VMWare and Virtual Box. They provide a full environment (OS, database...) and all required dependencies.

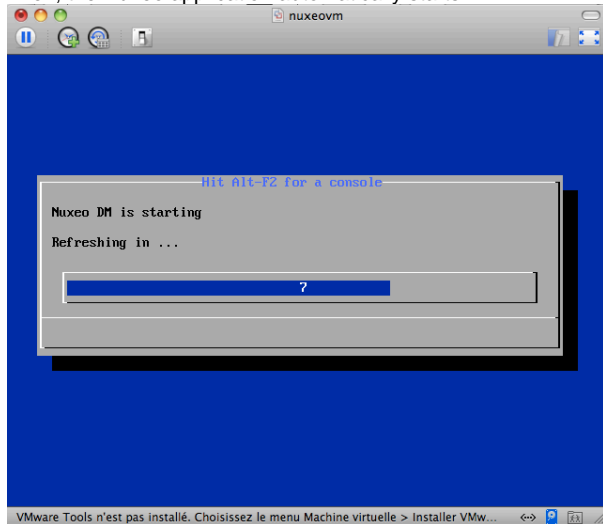
To install the Nuxeo DM virtual machine image and start Nuxeo:

1. Unzip the downloaded package.
You get a folder with the required file for the virtual machine image to run.
2. Start the virtual machine image in your virtual machine application by double-clicking on it.

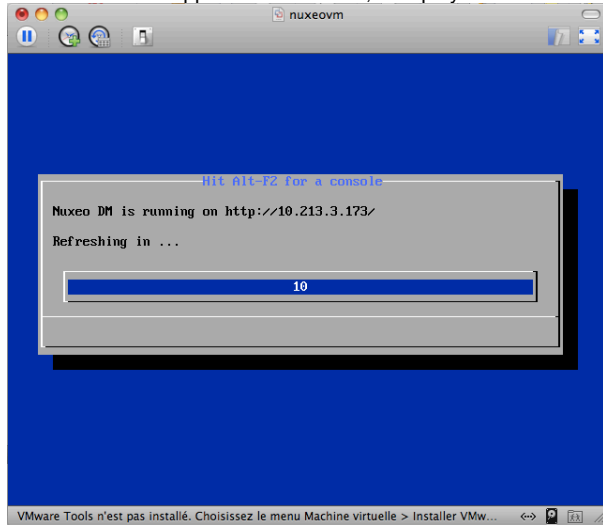
The VM image starts.



Then, the Nuxeo application automatically starts.



When the Nuxeo application is started, it displays the address at which it is available.



3. In your browser, type the indicated address.
 - If you're using an application based on the version 5.4.0 of the Nuxeo platform, the Nuxeo application login page is displayed: log into the application using the **Administrator** user name and the **Administrator** password.
 - If you're using an application based on the version 5.4.1+ of the Nuxeo platform, the **st artup wizard** is displayed to help you configure your application.



Shell root access

Since 5.4.2: the password for the root and nuxeo users are generated the first time you start the virtual machine and are displayed on the console.
 Before 5.4.2: for system administration, there is no password for root, you have to log in using nuxeo/nuxeo (user/password) then use "sudo".



See Nuxeo DM User Guide to discover all Nuxeo DM features.

Download



Download this documentation in PDF.

Detailed install instructions

- **Some requirements before you start:** check Java version and install it if needed.
- **Set up additional resources:** install the possible external software you may need for a comprehensive experience of Nuxeo.
- **Advanced configuration:** Customize your Nuxeo install, configure it for production.

What to do next?

Register your Nuxeo DM instance on Nuxeo Connect to configure and get packaged customization from the Nuxeo Marketplace.
 Or customize your Nuxeo DM yourself via [Nuxeo Studio](#), our online configuration environment.

Join the Nuxeo community

- Share your experience, get help and ask your questions on [Nuxeo Answers](#).
- Subscribe to the [ECM list](#) to stay informed about the evolution of the platform.
- Follow us on [LinkedIn](#), [Facebook](#) and [Twitter](#).

Some requirements before you start

Nuxeo DM can run on Linux, Mac OS X and Windows operating systems.

All you need for a quick start is a **Sun Java Development Kit (JDK)** (*a JRE is not enough*). As of Nuxeo EP 5.4 and the applications based on it such as Nuxeo DM 5.4 or Nuxeo DAM 1.2, **Java 6** (also called Java 1.6) is required.



We currently support Sun's JDK, don't hesitate to contact us if you need us to support a JDK from another vendor.

Check your Java version

To check that you have the right version of Java

1. Open a terminal:
 - on Linux or Mac OS X: open a terminal.
 - on Windows: press "windows" key + r, type "cmd" (or "command") in the run window and press "OK" or open the "Prompt command" from "Start > Programs > Accessories" menu.
2. Type "java -version" and press "Enter".
 If Java is correctly installed on your computer, the name and version of your Java virtual machine is displayed:

```
$ java -version
java version "1.6.0_20"
Java(TM) SE Runtime Environment (build 1.6.0_20-b02-279-10M3065)
Java HotSpot(TM) 64-Bit Server VM (build 16.3-b01-279, mixed mode)
```

If Java is not installed on you computer, it fails to display the Java version. Then, you need to install Java (see below).
 If Java is installed but not included in the PATH, it fails to find the Java command. Then, you need to add \$JAVA_HOME/bin/ in your PATH (see [How do I set or change the PATH system variable?](#)).

Install Java

For Windows users

If the required version of Java is not installed on your computer:

1. Download it from [Sun website](#) and choose the appropriate platform for your hardware and Windows version.
2. Run the downloaded .exe file and follow the instructions displayed.

For Linux users

On a modern Linux distribution, you can now install Sun Java 6 with the packaging system of your distribution (using rpm, apt, yum, etc.).

If the JDK from Sun is not available for your OS, you can still [download it from Sun website](#).



Since Ubuntu 10.4 (Lucid Lynx), sun-java-6 is available from partners software sources (apt repositories).

For Mac OS users

An appropriate version of Java should already be installed on your computer if you are using Snow Leopard (Java 6).

Set up additional resources

Nuxeo DM uses external software for some features. They need to be installed on the server in addition to Nuxeo DM.

Here is the list of additional resources you may want to install:

- OpenOffice.org: used for web preview and annotations of office documents
- pdftohtml: used for web preview of PDF documents
- ImageMagick: used for preview, tiling and rotation of picture documents

Set up OpenOffice.org and pdftohtml for preview and annotation on Office and PDF documents

Installing OpenOffice/LibreOffice and pdftohtml on the server is only required if you need to use preview (and then possibly annotations) on PDF and office documents.

1. Download and install the following optional components:
 - PDFtoHTML from <http://sourceforge.net/projects/pdftohtml/files/> (necessary for PDF documents preview and annotations)
 - OpenOffice.org 3.x or greater. Available from <http://www.openoffice.org/> (necessary for office documents preview and annotations)
Or LibreOffice 3.x or greater. Available from <http://www.libreoffice.org/> (necessary for office documents preview and annotations)
2. Start the OpenOffice/LibreOffice server (on a single line):

```
soffice.exe -headless -nofirststartwizard
-accept="socket,host=localhost,port=8100;urp;StarOffice.Service"
```



If OpenOffice/LibreOffice is already installed on your server, Nuxeo applications come with a daemon that should automatically start it. More information about the daemon configuration below.



If using LibreOffice, you have to add the path to the executable in your nuxeo.conf: `jod.office.home=/path/to/libreoffice`.

3. Restart the server after launching OpenOffice/LibreOffice server.

More information about the Nuxeo Office daemon

The deprecated OOoDaemonService has been replaced by OOoManagerService. The configuration for the new service can be found in `$NUXEO_HOME/templates/common/config/ooo-manager-config.xml`

On Windows, you also need to install Ghostscript <http://ghostscript.com/releases/>

Set up ImageMagick for picture tiling features

The image tiling used in the preview of large images, and so for annotations, needs the installation of the [ImageMagick](#) software. Please see Nuxeo-Book chapter [about "Image tiling"](#). Requirements (ie: ImageMagick 6.3.7 or later) are defined in the installation section.

Advanced configuration



For more information on how to install and configure your Nuxeo server, see the [Nuxeo configuration page](#).

Deploying Nuxeo DM on your (Amazon AWS) cloud

Need a quick Nuxeo instance for your cloud? You can deploy one in just a few minutes with our CloudFormation template, as we provide a template that will automatically install the latest Nuxeo DM on your Amazon AWS and all the required resources.

Prerequisites

You need an account on Amazon AWS with the CloudFormation service activated. To sign up for AWS, just go to <http://aws.amazon.com/> and click on the "Sign Up Now" link.

To activate the CloudFormation service, sign in to your management console, click on the "CloudFormation" tab and follow the instructions.

If you don't have a keypair, you will also want to create a one so you can connect to your instance later. You can create one in the "EC2" tab in your management console.

You're ready to deploy our template!

Deploying the template

Deploying the Nuxeo DM template on Amazon AWS installs:

- the latest version of Nuxeo DM, with a PostgreSQL database and an Apache2 HTTP front-end;
- all the required Amazon resources, which are: an EC2 instance, an elastic IP, an EBS volume.

To deploy the Nuxeo DM template:

1. Sign in to your CloudFormation management console.
2. Choose the region you want your stack to be deployed in.



3. Start the new stack creation by clicking the "Create New Stack" button.



- Choose a stack name and fill in the template URL with: <https://nuxeo.s3.amazonaws.com/templates/NuxeoDM.template>.

Create Stack Cancel

SELECT TEMPLATE SPECIFY PARAMETERS REVIEW

AWS CloudFormation gives you an easier way to create a collection of related AWS resources (a stack) by describing your requirements in a template. To create a stack, fill in the name for your stack and select a template. You may choose one of the sample templates to get started quickly, or one of your own templates stored in S3 or on your local hard drive.

Stack Name:

Stack Template Source:

Use a sample template

Upload a Template File

Provide a Template URL

Show Advanced Options

Continue

- Fill in your previously created keypair name (KeyName) and the type of amazon instance you want. You can find a list of instance types at <http://aws.amazon.com/ec2/instance-types/>. The default (c1.medium) is suitable for small to medium size installations. If you choose a different instance type, check its "API name" on the instance types page and use that for the "InstanceType" field.

Create Stack Cancel

SELECT TEMPLATE SPECIFY PARAMETERS REVIEW

Template Description: Nuxeo DM installation.

Specify Parameters

Below are the parameters associated with your CloudFormation template. You may review and proceed with the default parameters or make customizations as needed below.

KeyName
 Name of an existing EC2 KeyPair to enable SSH access to the instances

InstanceType
 Type of EC2 instance to launch

[< Back](#) **Continue**

- Review your settings and click on the "Create Stack" button to start the creation process.

Cancel

SELECT TEMPLATE
SPECIFY PARAMETERS
REVIEW

Please review the information below, then click Create Stack.

Stack Information Edit Stack

Stack Name: MyVeryOwnNuxeo

Stack Description: Nuxeo DM installation.

Template: <https://nuxeo.s3.amazonaws.com/templates/NuxeoDM.template>

Parameters Edit Parameters

KeyName: mykeypairname

InstanceType: c1.medium

Notification Edit Notification

Notification: (no notification)

Creation Timeout: none

Rollback on Failure: true

< Back
Create Stack

After a few minutes, the instance creation is complete.

Status

● CREATE_COMPLETE

✔ Hit the "Refresh" button on the top right corner of the page now and then as it doesn't auto-refresh.

- Select the line that shows your new CloudFormation stack, then the "Outputs" tab at the bottom. It shows the URL at which you can reach your brand new Nuxeo DM.

i Note that it can take a few more minutes for Nuxeo to be active on that URL as there can still be some installation tasks running at this point.

The template can be used for testing and production purposes. As for every production setup, you will want to check that the configuration suits your needs and tune it as needed: [HTTPS setup](#), disk size, ...